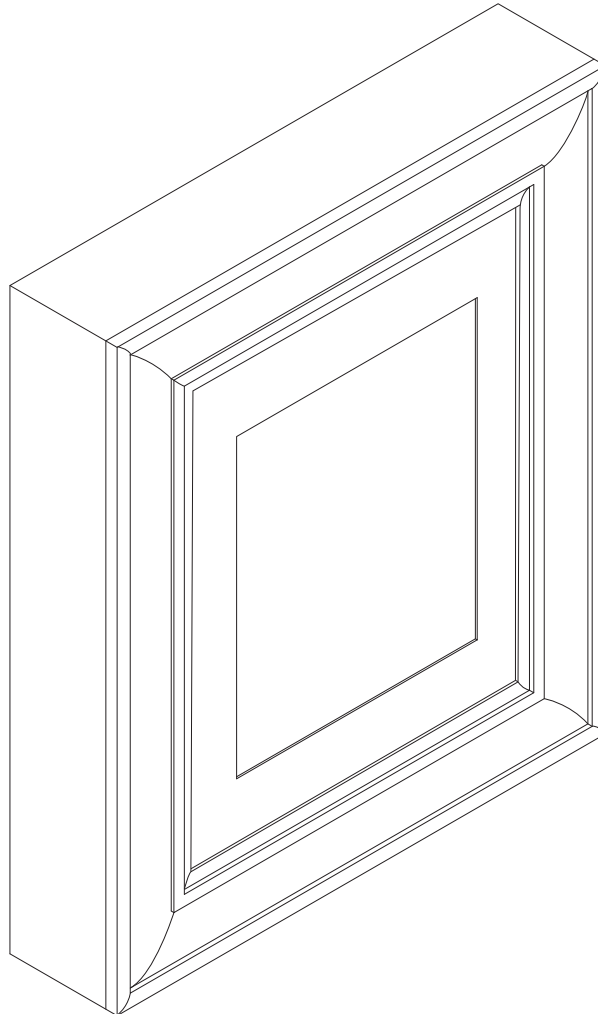




SKU NO. : FP-4TSO-596G  
Model : JPD101  
Patent No. : US 8,381,661 B2



## FLIP FRAME WALL CABINET

Operator's Manual p. 5



**Customer Service : 1-866-216-1072**

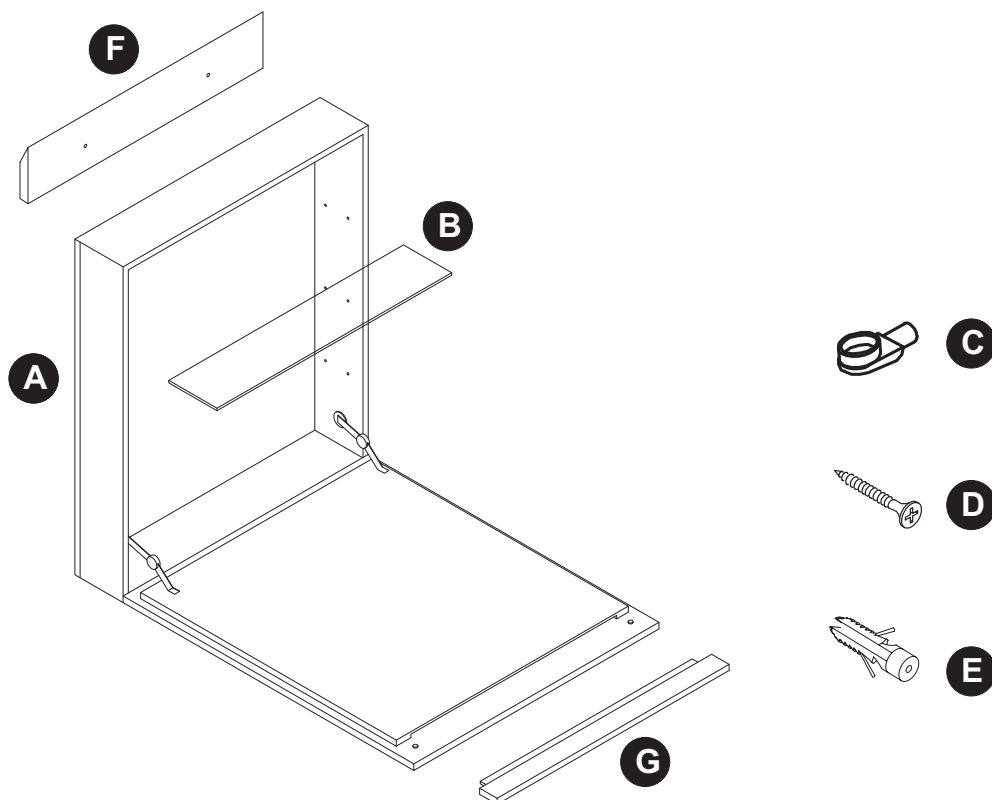
Our Customer service staff is available to help you. For help with product assembly, to report damaged or missing parts, or for any other information about this product, please call our toll-free number.

**SAVE THIS MANUAL**

Keep this manual and the original sales invoice in a safe, dry place for future reference.

## PACKAGE CONTENTS

| Part | Description   | Quantity |
|------|---------------|----------|
| A    | Cabinet       | 1        |
| B    | Glass shelf   | 3        |
| C    | Shelf bracket | 12       |
| D    | Screw         | 3        |
| E    | Anchor        | 3        |
| F    | French cleat  | 1        |
| G    | Batten        | 1        |



## SAFETY INFORMATION

Please read and make sure you understand the whole contents of this manual attempting to assemble, operate or install the product. If you have any questions regarding the product, please contact Customer Service at 1-866-216-1072.

### WARNING

1. Do not overload counter-top with more than 6 pounds.
2. Do not load the unit with more than 5 pounds per shelf.
3. Do not load the unit with more than 20 pounds for the whole cabinet.
4. Close supervision is necessary for Flip Frame if being used near children.
5. Safely discard all packing material.
6. Keep small parts away from children.
7. Another person may be required to help install this unit.

## PREPARATION

---

Please make sure all parts are available before beginning to install the product. Compare parts with package content list and hardware content list. If any part is missing or damaged, do not attempt to assemble, install or operate the product. Contact customer service for replacement parts.

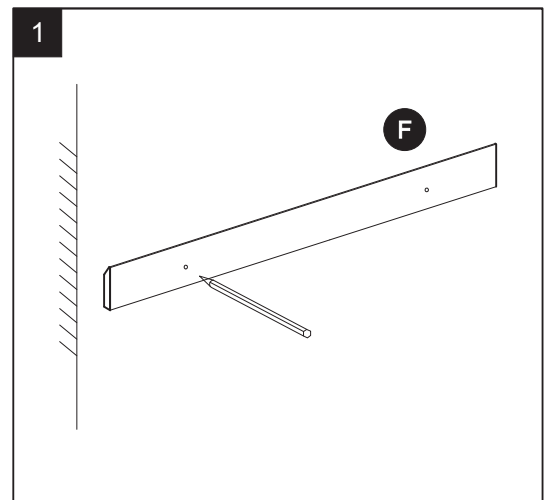
Estimated assembly time: 20 minutes

Tools required for assembly (not included):  
Phillips screwdriver, electric drill, hammer, carpenter's level.

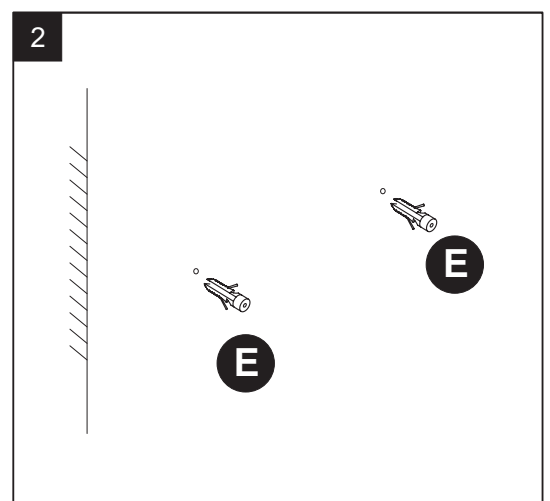
## ASSEMBLY INSTRUCTIONS

---

1. Place French cleat (F) on the wall and use it as a guide to determine the points to locate the anchors (E). Use a pencil (not included) to mark the position of the anchors (E) on the wall. Use a level (not included) to ensure cabinet (A) will be level and plumb against the wall.

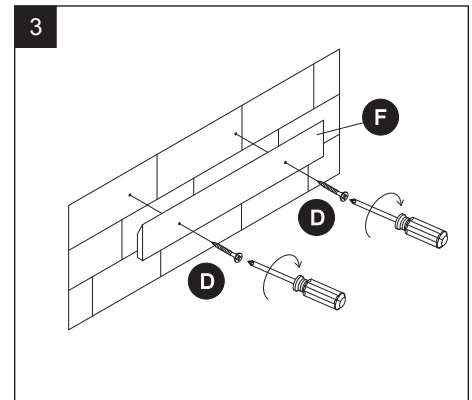


2. Use a 3/16 in. drill bit (not included) to drill 1/4 in. guide holes at the previously marked locations. Insert anchors (E) into the holes until the flanges on the anchors (E) are flush against the wall.

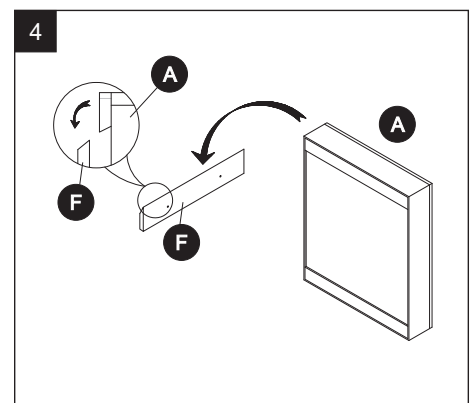


## ASSEMBLY INSTRUCTIONS

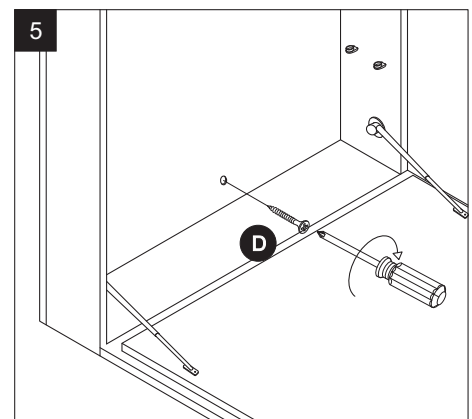
3. Insert screws (D) through the predrilled holes inside the French cleat (F) and into the anchors (E) and tighten securely.



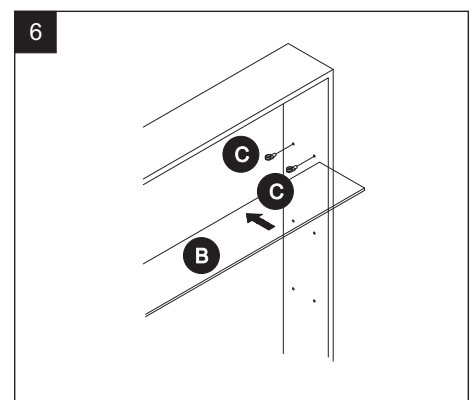
4. Hang the cabinet (A) onto the French cleat (F).



5. Mark the wall through the predrilled hole in cabinet (A) with a pencil. With the help of another person, remove the cabinet (A) from the wall. Use the marked point as the insertion point for an anchor (E). Using a 3/16 in. drill bit, drill a hole on the mark you have made on the wall. Place Phillips screwdriver in the recesses of anchor (E). Slowly turn anchor (E) clockwise while applying pressure until flanges just touch the wall. Again, align the slot on the back of cabinet (A) slightly above French cleat (F) and slide cabinet (A) down until the slot rests on French cleat (F). Insert screw (D) through predrilled hole inside cabinet (A). Tighten screw (D) against the wall.



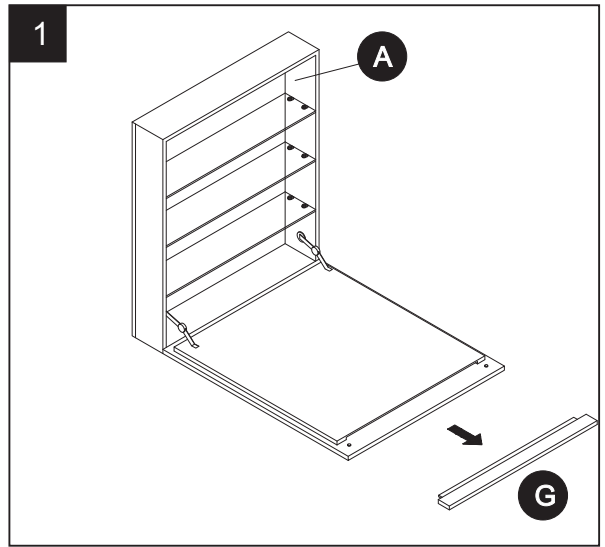
6. Insert shelf brackets (C) into corresponding holes at the desired level. Place shelves (B) over shelves brackets (C)



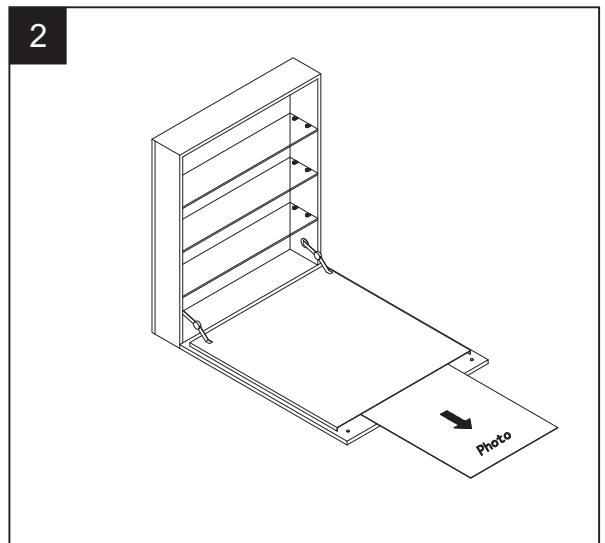
**REMINDER**

If you wish, replace the photos with your favorite ones.  
Please be careful and follow the instruction below  
See instructional video at [www.MyFlipFrame.com](http://www.MyFlipFrame.com)

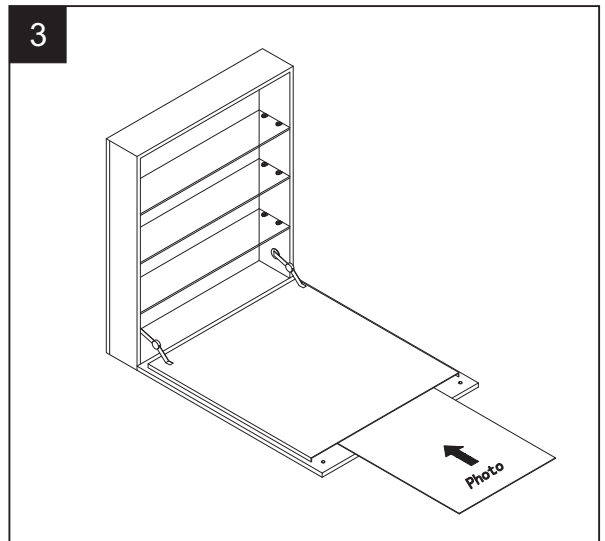
1. Change picture while the unit is secured to the wall.  
Take the batten (G) out of the back of front frame.



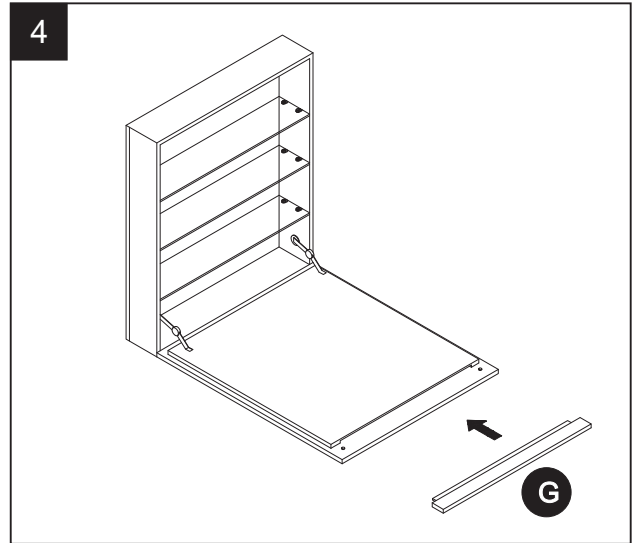
2. From underneath slide the glass and photo 5 inches past frame.  
Leave the glass in unit and remove only the photo



3. Slide the new photo and the glass back into the frame



4. Put the batten (G) back.



## CARE AND MAINTENANCE

---

**Glass:** Wash and clean regularly using a non-abrasive neutral (pH balanced) glass cleaner. Light scratches can be taken out by using a mild abrasive product. Rinse surface thoroughly afterward. All spills should be cleaned immediately. Do not allow acidic substances, such as vinegar, to rest on the glass surface as it will permanently cause a cloudy appearance. Avoid contact with oils, petroleum-based or caustic products.

**Cabinet:** Wipe dust frequently with a clean, soft, dry, lint-free loth. Use only polishes that contain detergents, emulsifiers and mineral oil. Avoid using silicone cleaners and waxes. Clean up excess water and spills immediately. Water left over a long period of time will cause white spots in the finish.

## WARRANTY

---

The warranty applies only to the original purchase. To obtain warranty service, call our customer service line at 1-866-216-1072 Call 24 Hours a Day.

The product is guaranteed for 12 months if used under normal conditions. Any warranty is invalid if the product has been overloaded or subject to neglect. Heavy-duty or daily professional /commercial usage are not guaranteed. Due to continuous product improvement, we reserve the right to change the product specifications without prior notice.